

OFFICIAL SAMPLE BALLOT

PRIMARY ELECTION ★ AUGUST 30, 2016

DEADLINE FOR PARTY CHANGES AND NEW REGISTRATIONS:
AUGUST 1, 2016

REGISTER AND VOTE IN EVERY ELECTION!

EVERY ELIGIBLE AND REGISTERED VOTER MAY VOTE IN THIS ELECTION. ALL REGISTERED VOTERS, REGARDLESS OF PARTY AFFILIATION, MAY VOTE ON ISSUES, UNIVERSAL PRIMARY CONTESTS AND NONPARTISAN CANDIDATES DURING A PRIMARY ELECTION. SOME RACES WILL BE DECIDED IN THIS ELECTION.

REPUBLICAN BALLOT

United States Senator (Vote for One)

Carlos Beruff REP
 Ernie Rivera REP
 Marco Rubio REP
 Dwight Mark Anthony Young REP

Representative In Congress District 6 (Vote for One)

Fred Costello REP
 Ron Desantis REP
 G. Galloway REP

Sheriff (Vote for One)

Donald Fleming REP
 John Lamb REP
 Jerry O'Gara REP
 Rick Staly REP
 Mark Whisenant REP
 Chris Yates REP

Supervisor Of Elections Universal Primary Contest (Vote for One)

Kaiti Lenhart REP
 Kimble Medley REP
 Abra Seay REP

Board Of County Commissioners District 1 (Vote for One)

Charles F. Erickson Jr REP
 Ken Mazzie REP
 Dan Potter REP

Board Of County Commissioners District 3 (Vote for One)

Jason France REP
 David C. Sullivan REP

Board Of County Commissioners District 5 (Vote for One)

Denise Calderwood REP
 Donald O'Brien REP

PARTY OFFICES

State Committeeman (Vote for One)

Dennis McDonald REP
 David C. Sullivan REP

State Committeewoman (Vote for One)

Sharon A. Demers REP
 Janet O. McDonald REP

VOTERS IN PRECINCT 11 ONLY

Precinct 11 Precinct Committeeman (Vote for up to Three)

Luis Alberto Garcia REP
 Mark R. Olson REP
 Daniel L. Potter REP
 Jasper Spears REP

VOTERS IN PRECINCT 18 ONLY

Precinct 18 Precinct Committeeman (Vote for up to Seven)

Joe Kowalsky REP
 Samie J. Lizzio REP
 Andrew Moss REP
 James O'Connell REP
 Anthony Panetta REP
 Clarence Parsons REP
 Ronald Radford REP
 Richard B. Russell REP
 Charles Allen Steen REP

DEMOCRATIC BALLOT

United States Senator (Vote for One)

Roque "Rocky" De La Fuente DEM
 Alan Grayson DEM
 Pam Keith DEM
 Reginald Luster DEM
 Patrick Murphy DEM

Representative In Congress District 6 (Vote for One)

William (Bill) McCullough DEM
 Jay McGovern DEM
 George Pappas DEM
 Dwayne L. Taylor DEM

Sheriff (Vote for One)

Larry D. Jones DEM
 Jim Manfre DEM

Supervisor Of Elections Universal Primary Contest (Vote for One)

Kaiti Lenhart REP
 Kimble Medley REP
 Abra Seay REP

PARTY OFFICES

State Committeeman (Vote for One)

Dan Parham DEM
 Paul J. Tetreault DEM

State Committeewoman (Vote for One)

C. Sue Hecht DEM
 Constance Parham DEM

DEMOCRATIC BALLOTS WILL ALSO INCLUDE ALL NONPARTISAN RACES AND ISSUES.

LIBERTARIAN BALLOT

United States Senator (Vote for One)

Augustus Invictus LPF
 Paul Stanton LPF

Supervisor Of Elections Universal Primary Contest (Vote for One)

Kaiti Lenhart REP
 Kimble Medley REP
 Abra Seay REP

LIBERTARIAN BALLOTS WILL ALSO INCLUDE ALL NONPARTISAN RACES AND ISSUES.

Show Your ID.

Florida Law requires each voter to present both photo and signature identification at the polls:

- Florida Driver's License
- Florida ID card (issued by DHSMV)
- U.S. Passport
- Debit or Credit Card
- Military ID or Student ID
- Retirement Center or Neighborhood Association ID
- Public Assistance ID
- Veteran Health Identification Card (issued by USDVA)
- Florida Concealed Weapon License
- Government Employee Identification Card

Expired ID's will not be accepted.

NONPARTISAN BALLOT

Supervisor Of Elections Universal Primary Contest (Vote for One)

Kaiti Lenhart REP
 Kimble Medley REP
 Abra Seay REP

Circuit Judge, 7th Judicial Circuit, Group 4 (Vote for One)

Chris France
 Sebrina L. Slack
 Stasia Warren

Circuit Judge, 7th Judicial Circuit, Group 10 (Vote for One)

Malcolm Anthony
 Scott DuPont

Circuit Judge, 7th Judicial Circuit, Group 13 (Vote for One)

David Hood
 A. "Kathleen" McNeilly

Circuit Judge, 7th Judicial Circuit, Group 17 (Vote for One)

Linda L. Gaustad
 Howard O. McGillin Jr

School Board District 3 (Vote for One)

Colleen Conklin
 Jason Sands

School Board District 5 (Vote for One)

Paul Anderson
 Maria P. Barbosa
 Sharon A. Demers
 Myra Middleton Valentine

CITY OF PALM COAST VOTERS ONLY

CITY OF PALM COAST RACES ARE NONPARTISAN AND WILL APPEAR ON ALL BALLOTS FOR PALM COAST VOTERS ONLY

City of Palm Coast Mayor (Vote for One)

John R. Brady
 Melissa Holland
 Dennis McDonald
 Ronald Radford

City of Palm Coast Council Member District 1 (Vote for One)

Robert Cuff
 Troy DuBose
 Sims E. Jones
 Arthur McGovern Jr

City of Palm Coast Council Member District 3 (Vote for One)

Nick Klufas
 Anita Moeder
 Pam Richardson


No. 4 Constitutional Amendment Article VII, Sections 3 And 4 Article XII, Section 34

Solar Devices or Renewable Energy Source Devices; Exemption From Certain Taxation and Assessment

Proposing an amendment to the State Constitution to authorize the Legislature, by general law, to exempt from ad valorem taxation the assessed value of solar or renewable energy source devices subject to tangible personal property tax, and to authorize the Legislature, by general law, to prohibit consideration of such devices in assessing the value of real property for ad valorem taxation purposes. This amendment takes effect January 1, 2018, and expires on December 31, 2037.

Yes
 No

NONPARTISAN RACES AND ISSUES WILL APPEAR ON ALL BALLOTS.



Are You Election Ready?

PREPARE NOW TO BE ELECTION READY ON AUGUST 30, 2016!

SOME RACES WILL BE DECIDED IN THIS PRIMARY ELECTION.

VOTE 2016

YOUR VOTE YOUR VOICE

This is your Official Sample Ballot for the Primary Election to be held on August 30, 2016. This sample ballot is being provided to you in advance of the election to give you the opportunity to study the candidates and issues. I encourage you to take this sample ballot with you when voting, to use as a reference.

This sample ballot shows the ballot for the entire county, not just your precinct. Your precinct number and polling location are shown on your Voter Information Card. If you have moved since the last time you voted and did not update your registration, please call (386) 313-4170 and change your address over the phone. Your precinct number and polling location may have changed.

You may choose to vote either by mail, at any early voting site or at your assigned precinct on Election Day. Please urge your friends and family to vote in the August 30th Primary Election. If you have questions about the election process or need more information, please contact the Elections Office.

Vote Early.

Any registered and eligible voter in the county may vote early.

Early Voting Dates & Times:

MONDAY SATURDAY
AUGUST 15 - AUGUST 27

Each day **10:00 a.m. - 6:00 p.m.** including weekend days.

Early Voting Locations:

- Flagler County Public Library**
At the corner of Belle Terre & Palm Coast Parkway
2500 Palm Coast Parkway N.W. in Palm Coast
- Palm Coast Community Center**
At the corner of Clubhouse Drive & Palm Coast Parkway
305 Palm Coast Parkway N.E. in Palm Coast
- Flagler County Supervisor of Elections Office**
In the Government Services Building
1769 E. Moody Blvd., Bldg. 2, Ste. 101 in Bunnell

Vote By Mail.

Any eligible and registered voter in Flagler County may choose to Vote By Mail. Mail ballots (also known as absentee ballots) are counted in the State of Florida during every election and are among the first results available at 7:00 P.M. on Election night. Vote By Mail ballots are NOT forwarded by the US Postal Service. You must provide an accurate mailing address at the time of your request. A mail ballot request to an address other than the elector's address on file, must be submitted in WRITING and SIGNED by the voter. Use the form below to request your mail ballot. or you may call (386) 313-4170 to request by phone.

A Vote By Mail request is not permanent. State law allows for a request placed now for all eligible elections to be valid through the end of 2018. Mail ballots must be received in the Elections Office by 7:00 p.m. on Election Day. If mailing your voted ballot locally, please mail by THURSDAY BEFORE ELECTION DAY to allow for first-class delivery by the US Postal Service. Mail ballots may also be personally returned to the Elections Office during business hours, or anytime by using the secured After Hours Drop Box in the window at our main entrance.

Florida Is A Closed Primary State.

If you wish to vote in a partisan Primary Election, you must be a registered voter in the party for which the primary is being held. All registered voters, regardless of party affiliation, may vote on issues, universal primary contests and nonpartisan candidates during a Primary Election. The new voter registration and party affiliation change deadline is **August 1, 2016** for this election.

Register To Vote or Update Your Registration.

To register in person, simply complete a Florida Voter Registration Application at an authorized agency which includes: any Supervisor of Elections Office, public libraries, Florida Driver's License Offices, any office that provides public assistance or serves persons with disabilities (centers for independent living, WIC and Florida Department of Children and Families Offices), and armed forces recruitment offices. You may also submit your voter registration at the same time you apply for a new or renewed Florida Driver's License or Florida ID. The Florida Voter Registration Application can be used to register to vote or update your registration, download the form online: www.FlaglerElections.com/Vote

Have You Moved?

Call the Elections Office at (386) 313-4170 to change your address **BEFORE** going to any voting location. You must vote in your assigned precinct on Election Day. You may also change your address online: www.FlaglerElections.com/Address-Change

Where Do I Vote?

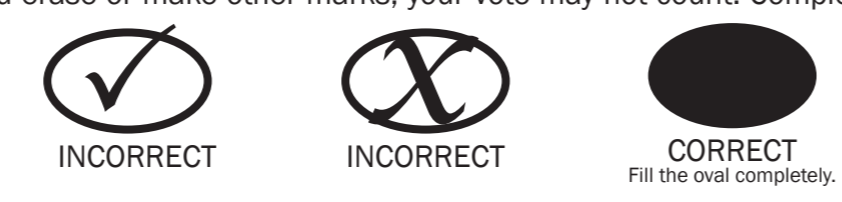
You must vote in your assigned precinct on Election Day. Call the Elections Office at (386) 313-4170 or find your precinct online: www.FlaglerElections.com/Precinct-Finder

Vote On Election Day.

Registered and eligible voters who choose to vote on Election Day must cast their ballot at their assigned polling place. Polls are always open from 7:00 a.m. - 7:00 p.m. on Election Day. Refer to your Voter Information Card to find the name and address of your polling place. **If you have recently moved**, please call the Elections Office at (386) 313-4170 to change your address BEFORE visiting any polling location in Flagler County.

How To Vote.

Use only the marking device provided, or a blue or black pen. If you make a mistake, don't hesitate to ask for a new ballot. If you erase or make other marks, your vote may not count. Completely fill the oval next to your choice:



ATTENTION VOTERS!

A vote-by-mail ballot request to an address *other than* the elector's address on file, must be submitted in WRITING and SIGNED by the voter. Please complete and deliver or mail the form below to request a vote-by-mail ballot.

Florida Statutes 101.62 (1)(b):

The supervisor may accept a written or telephonic request for a vote-by-mail ballot to be mailed to an elector's address on file in the Florida Voter Registration System from the elector, or, if directly instructed by the elector, a member of the elector's immediate family, or the elector's legal guardian; if the ballot is requested to be mailed to an address other than the elector's address on file in the Florida Voter Registration System, the request must be made in writing and signed by the elector. However, an absent uniformed service voter or an overseas voter seeking a vote-by-mail ballot is not required to submit a signed, written request for a vote-by-mail ballot that is being mailed to an address other than the elector's address on file in the Florida Voter Registration System.

VOTE BY MAIL REQUEST FORM

Please send me ballots by mail for the following election(s): **Check One Below**

Specific Election: _____ All Eligible Elections Through 2018

PLEASE PRINT CLEARLY

VOTER NAME: _____ (REQUIRED)

DATE OF BIRTH: ____/____/____ (REQUIRED) VOTER ID (IF KNOWN) _____

BALLOT MAILING ADDRESS: (REQUIRED)

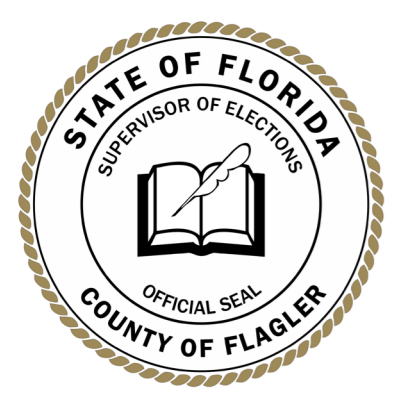
Florida law prohibits vote-by-mail ballots from being forwarded by the Post Office. You must provide a valid mailing address.

Street Address _____
or PO Box: _____
City: _____ State: _____ Zip: _____

PHONE NUMBER: _____ (OPTIONAL) Only for use by Elections Staff

X _____ VOTER SIGNATURE (REQUIRED) _____ DATE _____

REQUESTS WITHOUT DATE OF BIRTH AND VOTER SIGNATURE CANNOT BE PROCESSED. COMPLETE REQUEST AND RETURN. FOR PRIVACY, USE AN ENVELOPE.



Kaiti Lenhart
FLAGLER COUNTY SUPERVISOR OF ELECTIONS
1769 E. Moody Boulevard, Building 2, Suite 101 • PO Box 901 • Bunnell, FL 32110
Phone: (386) 313-4170 • Fax: (386) 313-4171 • Online: www.FlaglerElections.com

MAIL TO: SUPERVISOR OF ELECTIONS • P.O. BOX 901 • BUNNELL, FL 32110 • EMAIL TO: INFO@FLAGLERELECTIONS.COM
DELIVER TO: 1769 E. MOODY BOULEVARD • BUILDING 2 • SUITE 101 • BUNNELL, FL 32110